

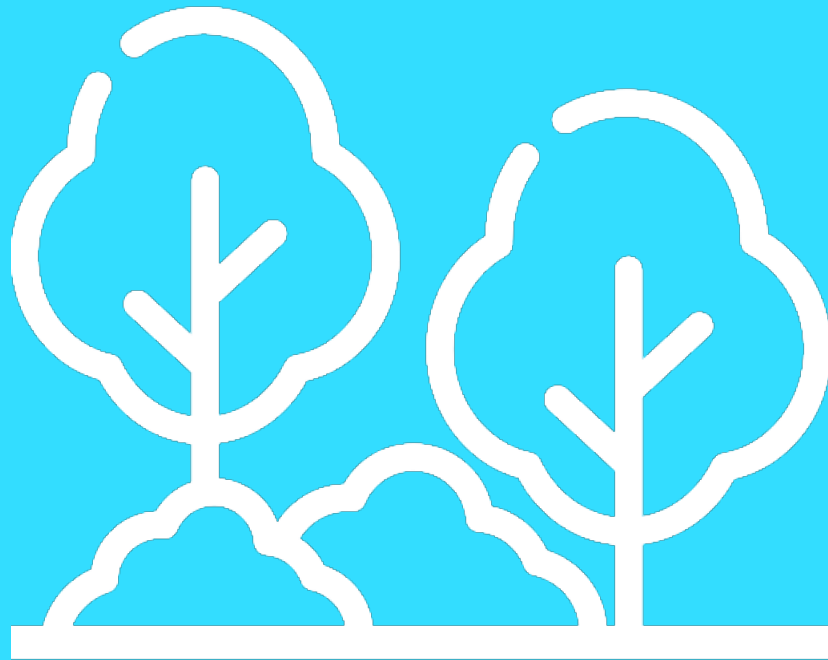
STEUBENVILLE NORTH
CHOICE NEIGHBORHOOD PLAN

4/17/24 COORDINATING COMMITTEE





EARLY ACTION UPDATE



Early Action Project

- MOUs between City and partners are approved
- Garfield Elementary students are naming the project
- Mike Thompson is working on a design for the outdoor learning space

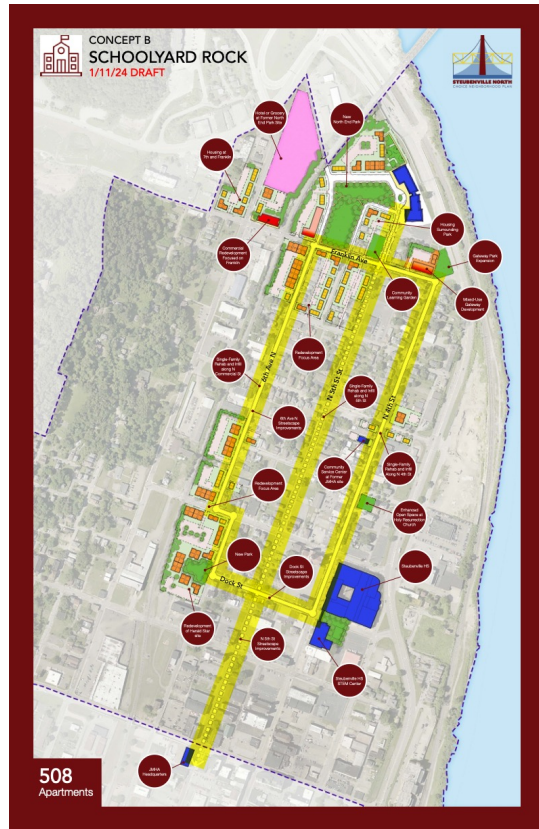


HOUSING FEEDBACK



Housing concepts

**Ranked #1
by the Community**



**Schoolyard
Rock**

**Ranked #2
by the Community**



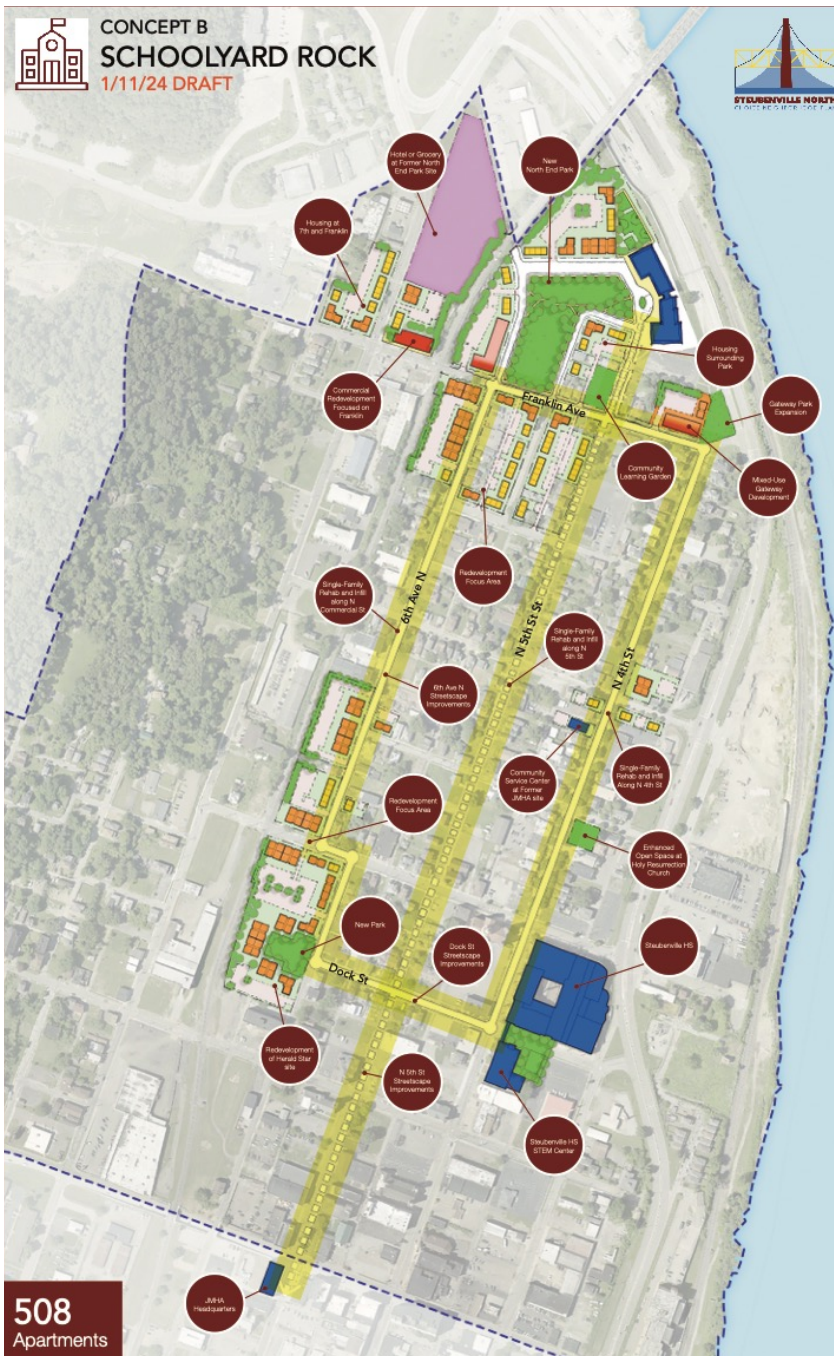
**Community
Crossroads**

**Ranked #3
by the Community**



**Northside
Alive**

Concept B



Likes

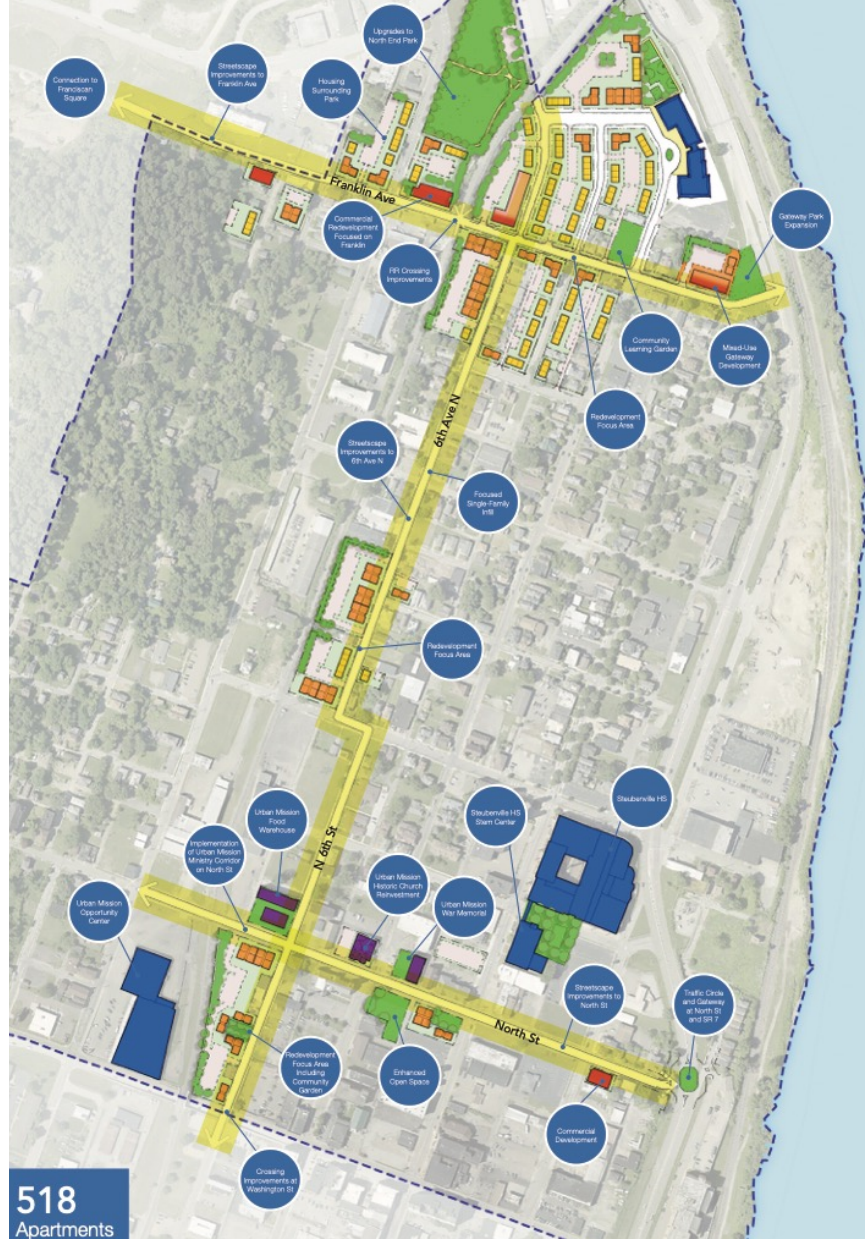
- Parks, streets, housing, and community spaces
- Central park with easy access

Dislikes

- Mixed opinions on the location and spread of amenities like hotels and commercial developments
- Lack of waterfront connection and green space

Suggestions

- More laundromats, grocery stores, and parks near schools
- Location of the park, type of residential development, and lack of midrise buildings
- Comprehensive coverage of the neighborhood, reflective of the area's history and community
- More improvements like walking trails and family fun facilities



Likes

- Franklin Avenue to Franciscan Square, mixed-income housing, and park expansions

Dislikes

- Lack of grocery store, insufficient commercial development, and community gathering spaces
- Spread-out nature of the plan, traffic circle implications, and concentrated housing near the park

Suggestions

- Desire for a waterfront park, further information on commercial redevelopment, and focus on downtown areas

Concept C



Likes

- Waterfront park development and green area in front of the elementary school
- Economic boost for the area

Dislikes

- Lack of connectivity to thriving areas
- Distance from grocery store
- Concentrated nature of the development area
- Safety of accessing the park

Suggestions

- Waterfront should be its own project
- Preference to use waterfront for restaurants/parks over hotels/grocery
- More single-family home ownership opportunities/amenities for families

The preferred plan should...

Preferred Plan



- Include a central park with easy access to the neighborhood
- Connect Franklin Avenue to Franciscan Square
- Reflect the the area's history and community
- Connect to downtown and other thriving areas
- Integrate home ownership opportunities
- Include opportunities for amenities, services, and a grocery
- Utilize the waterfront

DISCUSSION



DEVELOPER UPDATE



The developer's role is to...

- take the lead in securing local, state, federal, and private funding in support of the redevelopment effort
- participate in the design of the housing element
- coordinate housing activities with residents, JMHA, and City staff



Process Update

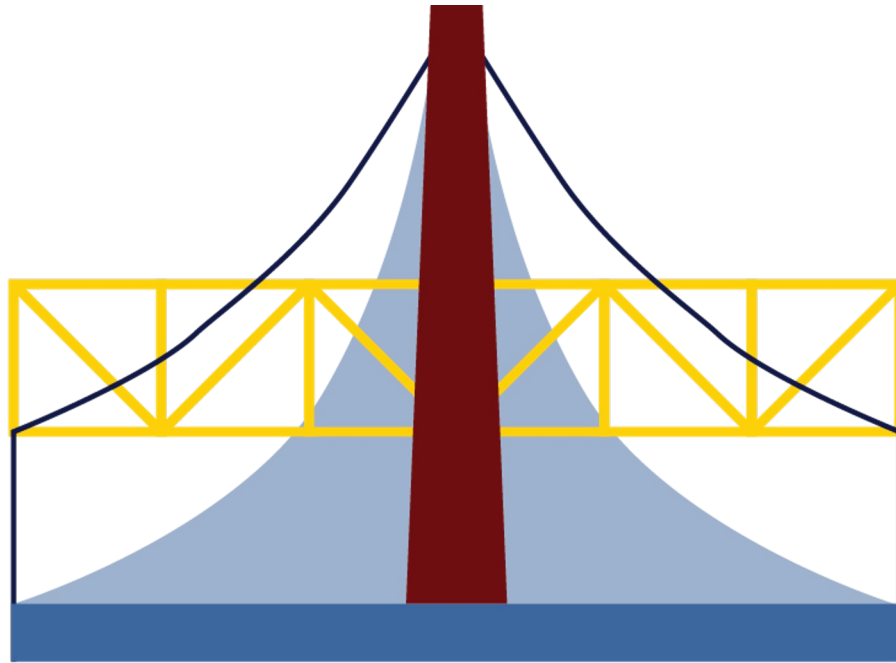
- RFP was closed on March 1
- 2 firms were recently interviewed
- Preferred development partner to be announced in May
- The developer will work with the team and provide input for the final direction of the plan



Next Steps

- Earth day cleanup
- Developer selection and agreement
- Draft Plan in June
 - People, Housing & Neighborhood strategies
- Community meeting in July





STEUBENVILLE NORTH
CHOICE NEIGHBORHOOD PLAN

4/17/24 COORDINATING COMMITTEE

